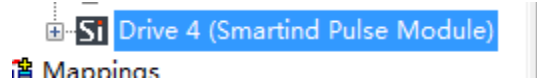
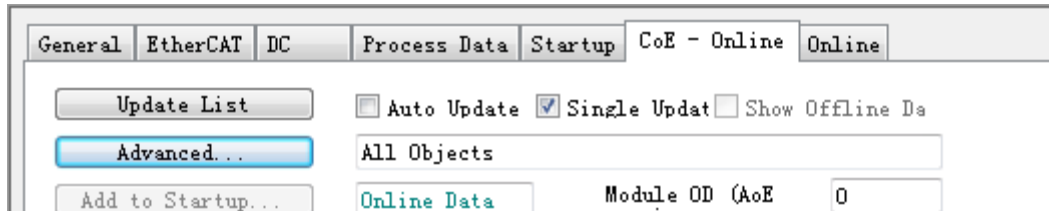


TwinCAT Driver 回零操作指南

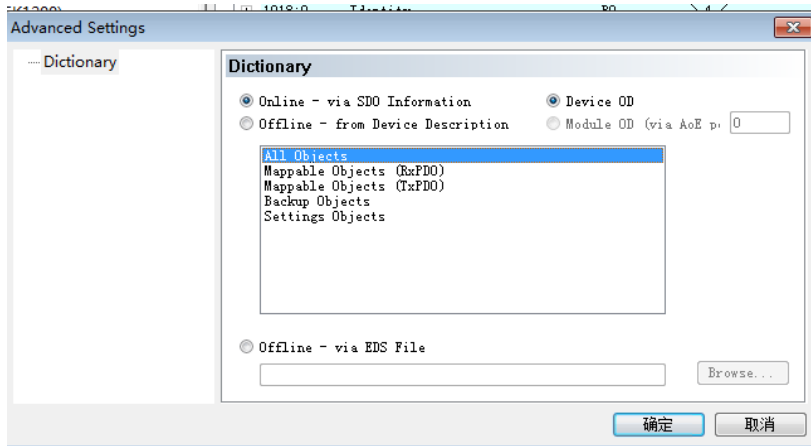
1. 在 TwinCAT System Manager 中，双击 SA1400 选项



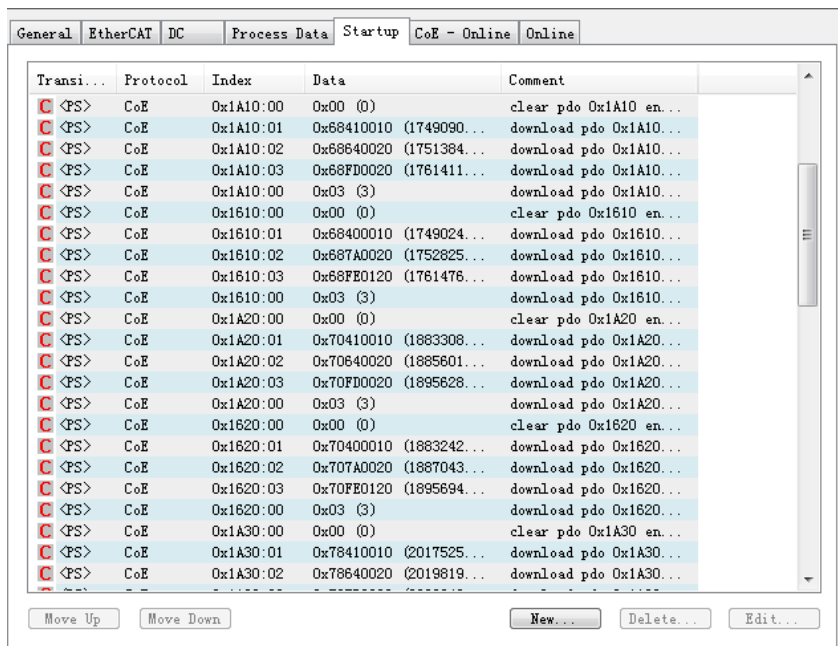
2. 点击 CoE-Online->Advanced



3. 选择 All Objects，点击确认



4. 选择 Startup->New



5. 将 Home offset (0x607C), HomeMethod (0x6098), Speed1 (0x6099:01), Speed2, (0x6099:02), Acc (0x609A) 设置好要求的参数增加到 Startup。

6. 在 PDO 中插入 Modes of Operation 并在 PLC 程序中 Link 一个 SINT (ModesOfOperation) 类型变量

The screenshot displays the SIMATIC Manager configuration window for a drive. It is divided into several sections:

- Sync Manager:** A table showing synchronization units (SM) with their sizes and types.

SM	Size	Type	Flags
0	512	MbxOut	
1	512	MbxIn	
2	60	Out...	
3	60	Inputs	
- PDO List:** A table listing all configured PDOs.

Index	Size	Name	Flags	SM
0x1A00	10.0	CSP TxPDO		3
0x1600	10.0	CSP RxPDO		2
0x1A10	10.0	CSP TxPDO		3
0x1610	10.0	CSP RxPDO		2
0x1A20	10.0	CSP TxPDO		3
0x1620	10.0	CSP RxPDO		2
0x1A30	10.0	CSP TxPDO		3
0x1630	10.0	CSP RxPDO		2
0x1A40	10.0	CSP TxPDO		3
- PDO Assignment (0x1C12):** A list of checkboxes for assigning PDOs to specific SMs.
 - 0x1600
 - 0x1610
 - 0x1620
 - 0x1630
 - 0x1640
 - 0x1650
- PDO Content (0x1A00):** A table showing the data objects within a PDO.

Index	Size	Offs	Name	Type
0x604...	2.0	0.0	Statusword	UINT
0x606...	4.0	2.0	Position Actual Value	DINT
0x60F...	4.0	6.0	Digital Input	UDINT
		10.0		
- Context Menu:** A menu is open over the 'Digital Input' entry, showing options:
 - Insert...
 - Delete...
 - Edit...
 - Move Up
 - Move Down

7. PLC 程序流程
- 将 ModesOfOperation 设置成 6
 - 执行调用 MC_Power()使能
 - Driver 回零启动
 - 调用 MC_SetPos 指令将 targetPos 置成 0
 - 等待回零完成 (ActPos =0)